

How to get to the Eötvös University?

From Mercure/Ibis Castle Hill:

You walk to the tram stop of tram number 56 or 56A (2 min. walk, stop called „Mikó utca”)

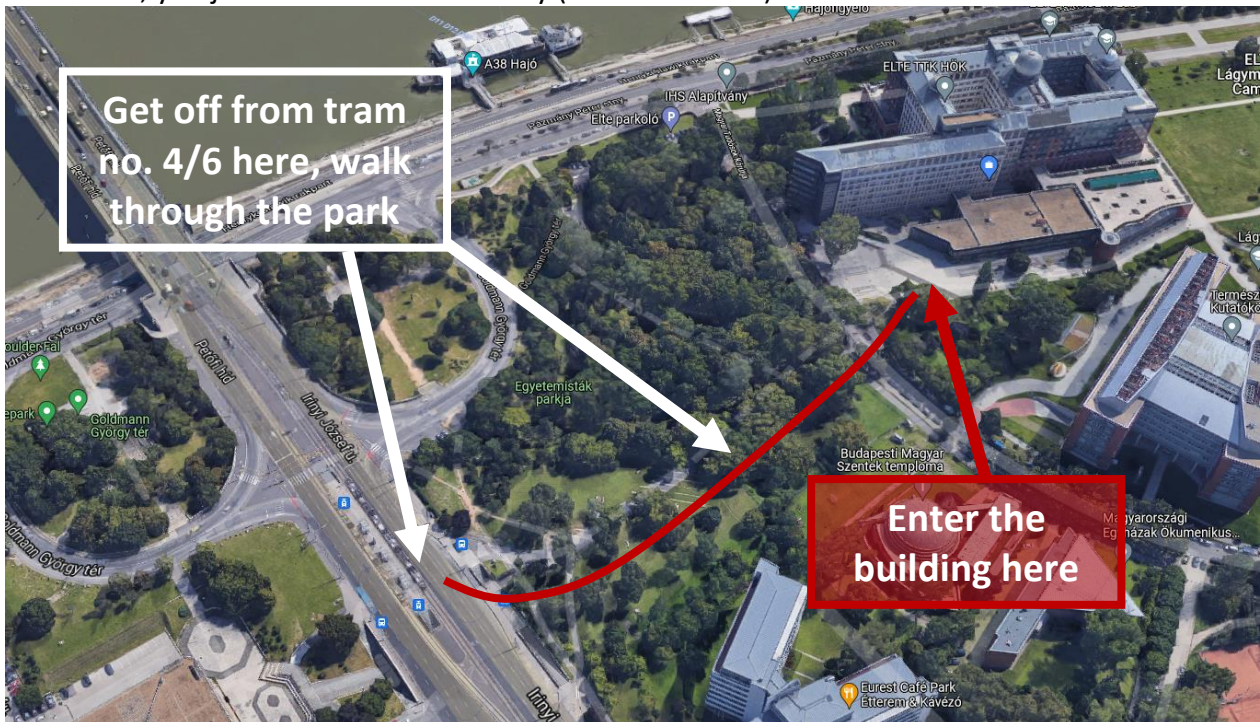


You go 7 stops until the stop called „**Móricz Zsigmond körtér**”, where you change to tram number 6, and you go 2 stops with it.



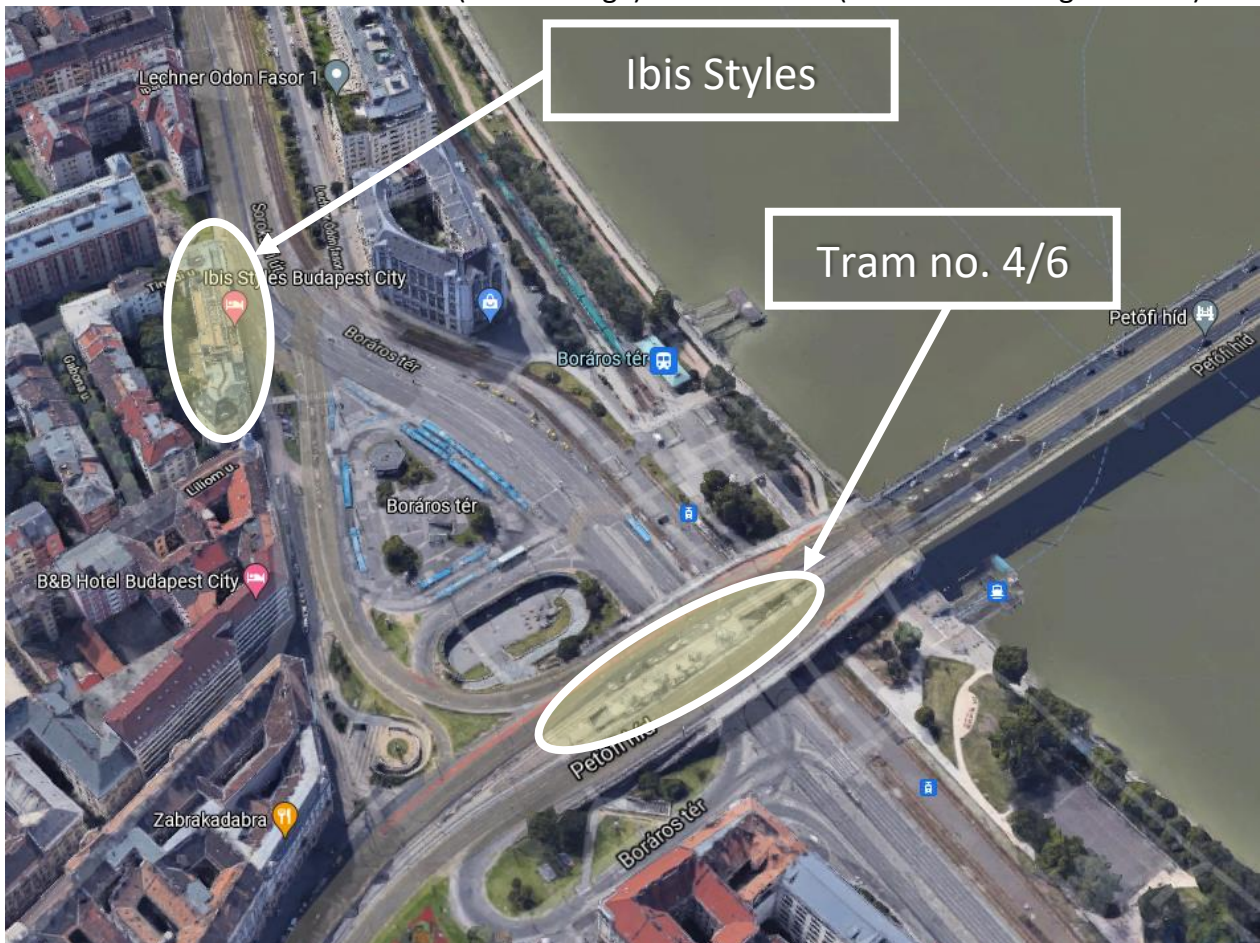
From the tram stop to the campus

From tram 4 or 6, you need to get off at the stop called „Petőfi híd” (Petőfi bridge).
From here, you just walk to the University (2 minutes walk):



From Ibis Styles

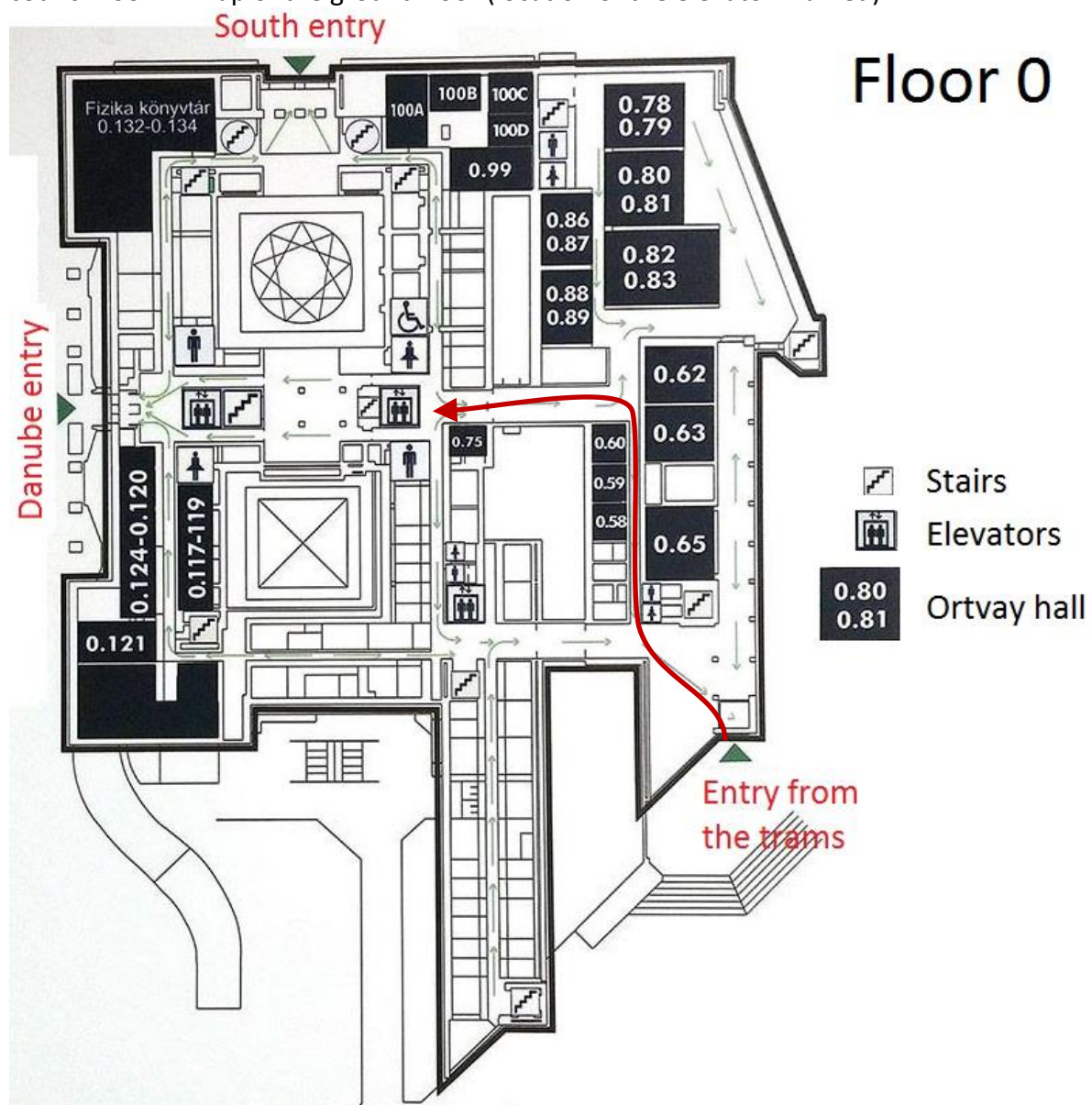
Take tram 4 or 6 from "Petőfi híd" (Petőfi bridge) towards Buda (or cross the bridge on foot).



Entering the building



In the building, you shall look for the 7th floor, room 7.22, called „Kari tanácssterem” or „Faculty council room”. Map of the ground floor (location of the elevator marked):



Map of floor 7 (conference is held in room 7.18-7.22):

